

Light this Light that

LED Deck, Wall & Eave Light

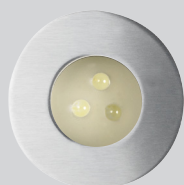
316 Marine Grade Stainless Steel or Solid Copper

Extremely low voltage

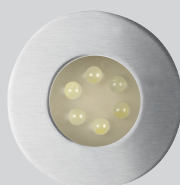
"Coogee"



Model shown:
LTDCC30



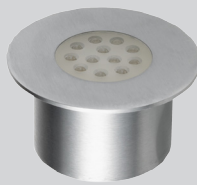
Model shown:
LTDCC3



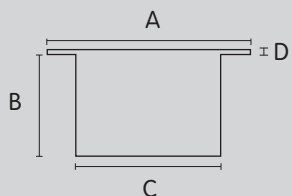
Model shown:
LTDCC6



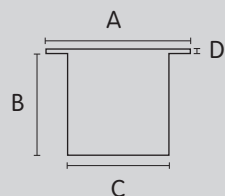
Model shown:
LTDCC12



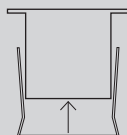
Profile is the same
for LTDCC3, 6 and 12



Model shown:
LTDCC12



Model shown:
LTDCC6 and LTDCC3



Press fixing clip over
bottom of light casing
(comes with light)

MADE IN AUSTRALIA

Your Australian Made **Light This Light That** 316 'Marine Grade' Stainless Steel or Solid Copper Deck lights are available in four models. The Light This Light That LED Deck light is IP68 rated, which means it can be installed outdoors, under water, in your pond or water feature.

This light system contains non replaceable parts. Do not attempt to force open the light.

Indoor / Outdoor

model	dimensions				current watts	current mA (max)	lense degree
	length (A)	depth (b)	width (c)	thickness (d)			
LTDCCS3	55mm	35mm	38mm	2mm	0.25	20	45
LTDCCS6	55mm	35mm	38mm	2mm	0.5	40	45
LTDCCM12	70mm	35mm	50mm	2mm	1	80	45
LTDCCCL30	115mm	100mm	77mm	2.5mm	2.5	200	45

Note: 1 Amp = 1000 milliamps (mA).

Polarity sensitive.

Disclaimer: Consistent with our product development policy, improvements may be made which render the contents of this document different to that shown. While every care has been taken with the details on this specification sheet, Light This Light That Pty Ltd accepts no responsibility for any inaccuracies and reserves the right to change the specifications without incurring obligation. Light This Light That Pty Ltd reserves the right to change specifications without notice.
© Copyright 2013 Light This Light That Pty. Ltd.

Specifications:

Materials: Casing: 316 Marine Grade Stainless Steel (or solid copper).
316 Stainless Steel body is electroplated for additional protection against "tea staining"
Face: is made from weatherproof premium quality acrylic

Power Source: Low Voltage 12 V DC input (regulated)

Weatherproof Rating: IP 68
Pre wired: Rear entry 900mm (length) weatherproof cable (20 gauge)

Warranty: 3 years for electrics
10 years for 316 Stainless Steel and Solid Copper casing

Cabling: Light This Light That Weatherproof harness (18 gauge) with screw in plugs, or similar (see Light This Light That Accessories Catalogue)

LED type: State of art:  .5mm
Lights are polarity sensitive

LED Colours: Cool White Typical 5300 K
Warm White Typical 3000 K

 N30415 Complies with standards AS/ NZS CISPR 15: 2006

Features:

- Australian Owned
- Australian Made
- Extremely low energy consumption
- 12 volt low voltage
- Up to 60,000 hours life
- No globes to change
- Directional light efficiency
- Ambient light
- Solid state technology
- No fragile glass environment
- Non corrosive body
- Ideal for coastal environments
- No Ultraviolet radiation
- No Infrared radiation
- No UV to attract insects
- Cool to touch
- Doesn't burn plants
- No Mercury
- Portable
- Easy installation, easy to move
- Choice of sizes
- IP 68 - highest water proof rating
- No condensation issues
- Electrics protected from syphoning damage

Australian Owned & Australian Made



Distributor